

## Radically Simplify™ IT Operations

# Tidal™ Enterprise Adapter for Lawson

### Highlights

- Leverages and expands current Lawson investments to create a complete enterprise solution
- Supports cross-application, cross-platform dependencies
- Offers industry-leading distributed scheduling capabilities including: exception-based management, scalability, role-based security, enhanced manageability and unparalleled performance

### Key Benefits

- Leverages your Lawson investment to create a comprehensive business process automation solution for your entire enterprise
- Accelerates implementation and improves return on investment
- Connects Lawson to other platforms, other business applications and other Lawson instances with unlimited dependencies for broader, integrated work flows
- Consolidates Lawson application automation under one corporate-wide console with one staff and one set of internal procedures
- Reduces training and operational support to one application automation environment
- Provides richer, more advanced scheduling features than the native Lawson Job Scheduler for greater efficiency and productivity

One of the more important aspects of a Lawson® implementation is managing an organization's day-to-day business processes. While Lawson's internal scheduler, Job Scheduler, does an adequate job of managing its own batch processes, it is not optimized for all enterprise-wide scheduling requirements. For example, supervising dependencies across multiple applications and platforms, a functionality that's critical to the smooth operation of today's diverse organizations, is an impossible task for Lawson Scheduler alone. What datacenters need is a robust application automation solution that offers cross-application, cross-platform dependencies, centralized control, role-based security and sophisticated calendars, all of which increase staff productivity, decrease system downtime, and reduce the possibility of costly mistakes.

### Simplify Your Life

With the Tidal™ Enterprise Adapter for Lawson, Tidal Software™ brings the automation, manageability and reliability of the leading enterprise job scheduling solution to this leading ERP application. The Tidal Enterprise Adapter provides users with a complete process automation solution. Through Tidal, a process running within Lawson can depend on a process running in another system. Customers can leverage existing Lawson batch processes by incorporating them into a true enterprise-wide scheduling solution. This allows the application to share data with all the other strategic systems and applications in your environment.

### Key Features

- View and interact with Lawson processes in real time
- Cross-application and cross-platform dependency support
- Support for UNIX Lawson environment
- Single point-of-control for all job run requests
- Multiple types of business calendars
- Ability to view reports and alert personnel based on various report job statuses
- Ability to monitor files that are used as event triggers for the initiation of job submissions
- Queue and priority management for all job runs
- Centralized security and control for operations and scheduled jobs runs
- Job control is done within the Tidal Enterprise Scheduler console
- Synchronous monitoring of all Lawson job runs
- Extensive logging of all output information from each Lawson job run that is the same as that found in the Lawson Job Scheduler
- Supports UNIX, Windows NT/2000, Linux, z/OS and MPE/iX, as well as other leading ERP applications such as SAP R/3, PeopleSoft, and Oracle E-Business Suite

# Tidal™ Enterprise Adapter for Lawson

## How it Works

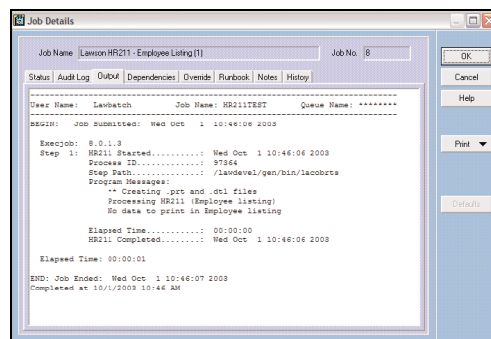
The Tidal Enterprise Adapter for Lawson can be used to define, launch, monitor and control Lawson processes using Tidal Software's proven integration framework and technology. With a combination of Lawson utilities, direct database access and Tidal integration API's, the Enterprise Adapter allows Lawson users to resolve failures more easily, incorporate multiple cross-application dependencies and utilize process models for Lawson jobs. The technology enables users to submit the Lawson jobs as well as monitor real-time success and failures of each Lawson job.

Furthermore, the Enterprise Adapter for Lawson provides the following additional features:

- Automatic recovery of Lawson jobs based on failure exit code or messages
- Able to recover or remove jobs from "Waiting" or "Need Recovery" and resubmit a new job
- Able to submit jobs based on Lawson defined queues
- Able to submit and manage Lawson Multi-Step jobs
- Tidal can utilize lacobrts (Lawson COBOL Runtime System) to run jobs which will bypass the Lawson Job Scheduler. This feature allows power users to be able to submit jobs in background to run
- Due to Tidal's advanced integration framework, no modifications to the Lawson environment are necessary

## The Complete Solution

Tidal Enterprise Scheduler has been successful at providing greater value and ROI to organizations investing in the Lawson technology. Process management is an essential part of an ERP solution as it ensures critical transactions from various systems and applications occur on time, every time. Tidal Enterprise Scheduler provides immediate problem detection and, in many cases, automatic resolution so that Lawson data flow is maximized. This enables operations staff to manage Lawson as well as other platforms and applications from one point-of-control, minimizing downtime, reducing errors and thereby enhancing productivity. In today's business climate, companies must do more with less while maintaining service level agreements. The Tidal Enterprise Adapter for Lawson provides the technology necessary to leverage your Lawson investment and increase the value of your ERP application.



Tidal Enterprise Scheduler captures Lawson job log detail as part of each job execution

**TIDAL**<sup>®</sup>  
SOFTWARE

For more information or to speak with a representative, contact Tidal Software™ at:

**1 (877) 55 TIDAL**  
**sales@tidalsoftware.com**

EMEA headquarters:  
**+44 1628 509 020**  
**+44 1628 509 120 (fax)**

Or visit our web site at:  
**www.tidalsoftware.com**