

Radically Simplify™ IT Operations

Tidal™ Enterprise Adapter for Oracle® Database

Key Benefits

- Leverages your Oracle investment to create a comprehensive business automation solution
- Links Oracle database with other platforms and business applications, allowing unlimited dependencies and broader, integrated workflows
- Consolidates Oracle automation through a single console managed by a single staff group and set of internal procedures
- Centers training and operational support staff in one application automation environment
- Provides richer, more advanced automation and management functions than the native tools as well as greater efficiency and productivity

Highlights

- Support for cross-application and cross-platform job dependencies
- Single point-of-control for enterprise-wide job scheduling
- Seamless integration with Oracle9i, and Oracle10g
- Simple point-and-click selection of Oracle job variables
- Flexible job scheduling that eliminates scripting
- Industry-leading scheduling that support exception-based management, scalability, role-based security, and enhanced management functionality

Key Features

- Automates executing Oracle database jobs, including those created within Oracle or Oracle Enterprise Manager or within Tidal Enterprise Scheduler
- Creates a pre-processor step for any Oracle database job that supports passing parameter values, such as selection criteria, to the job prior to running it
- Schedules both native Oracle jobs and PL/SQL scripts
- Monitors, sets dependencies, and interacts with parent and child processes, grouping logs, and output to show parent-child relationships
- Launches an Oracle job based on an external event such as the arrival of a file
- Generates output of Oracle jobs in XML and other formats without additional coding

If your business requires an enterprise-wide, heterogeneous automation solution capable of supporting your mission-critical Oracle9i and 10g databases, Tidal Enterprise Adapter for Oracle Database and Tidal Enterprise Scheduler is the right choice. This powerful combination brings the automation, manageability, and reliability of the premier enterprise automation and management solution on the market to this leading enterprise database platform. At last, you can maximize throughput and minimize the time consumed by Oracle-centric jobs whether maintenance related or driven from within Oracle itself or other parts of your enterprise.

Tidal Enterprise Scheduler enables you to schedule PL/SQL commands, Oracle database jobs, and stored procedures. In addition it can be used to preprocess and translate data generated by an Oracle application or module before it is processed by another Oracle application.

With Tidal Enterprise Scheduler, your Oracle jobs can now be part of larger business process workflows that are managed from a single console. Dependencies within workflows can now encompass events from across the entire enterprise. As a result, your company's application automation and management can be consolidated under one solution, reducing unnecessary staff effort and expense while increasing productivity.

How Tidal Enterprise Adapter for Oracle Works

The Enterprise Adapter for Oracle automates installation and provides options to meet your special requirements. No scripting, manual intervention, or changes to your Oracle database or configuration parameters are needed. Once Enterprise Adapter is configured, you can define and maintain the details of your Oracle jobs and

scheduled tasks from within Tidal Enterprise Scheduler. Enterprise Scheduler can also launch and monitor jobs already created within Oracle or Oracle Enterprise Manager. The full functionality of this heterogeneous automation solution is now available to Oracle, offering functions such as extensive alerts on job abnormalities, unavailability of resources or machines, real-time status information from a single console, load balancing, and the ability to interact with current and future jobs.

Defining and Running Oracle Jobs

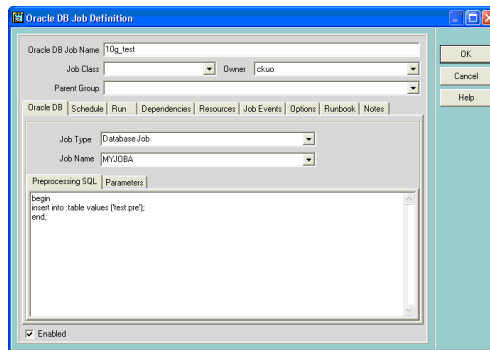
Within Enterprise Scheduler, you can define and run Oracle database jobs in two different ways. You can specify PL/SQL statements—a capacity not available through Oracle Enterprise Manager—which is helpful in generating reports. Alternatively, you can run DBMS jobs by selecting from those that have already been defined. In addition, Enterprise Scheduler offers different options for displaying job output, including aligned columns and XML options.

You can also define an Oracle database job by choosing one that already exists in Oracle or Oracle Enterprise Manager. Enterprise Scheduler also offers an option to run a set of SQL statements against your data to allow you to do such things as select specific data or modify data prior to executing a job.

Tidal Enterprise Adapter for Oracle Database

Key Features (continued)

- Allows online access to the output of PL/SQL jobs without needing to create an intermediary file
- Enables jobs to respond to Oracle DDL and DML events without coding or database triggers
- Imports Oracle and Oracle Enterprise Manager jobs directly into Enterprise Scheduler
- Utilizes both Enterprise Scheduler and Oracle events
- Integrates seamlessly with Oracle and transfers knowledge immediately by displaying familiar Oracle job names, valid commands, and steps from Enterprise Scheduler screens
- Delivers print and archive parameters used by pre-existing Oracle jobs
- Supports multiple Oracle instances and environments
- Creates a user-defined, filtered, real-time Windows® Explorer-style view of past, present, and future Oracle database jobs
- Uses automatic alert notification for Oracle processing, machine, and job status problems
- Offers the full range of Tidal Enterprise Scheduler calendaring features, making calendar options richer and more extensive than those offered by Oracle scheduling solutions
- Captures and displays error messages, providing information and logging from the Enterprise Scheduler functions
- Handles the heaviest processing loads through multi-threaded adapter architecture
- Offers script-less design, industry-leading ease of use, and unparalleled scalability



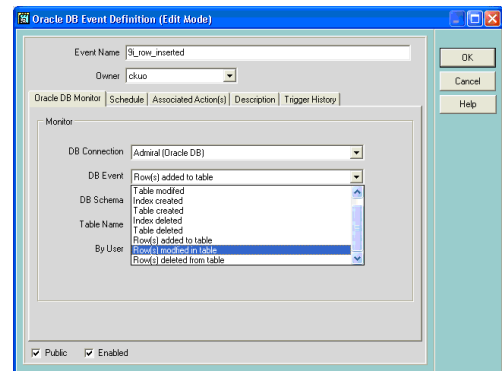
Tidal Enterprise Scheduler offers a pre-processing SQL option to execute SQL code that should run before the job is activated

Defining and Running Oracle Database Events

Enterprise Adapter for Oracle Database makes processing database events simple. Oracle database events include the ability to capture and respond to activities such as table modification, index creation, or database row activity. The complete range of Tidal Enterprise Scheduler actions also enables any database event to drive the workflow that transforms your business processes into administrative action – efficiently and automatically.

The Enterprise Scheduler Event Activity folder enables you to view all database events running to support creating and supporting event based job dependencies quickly and efficiently.

You can also easily pass variables from Tidal Enterprise Scheduler to an Oracle database job. This capability enables you to rapidly initiate an Oracle job based on an external event such as the arrival of a file from a trading partner.



Tidal Enterprise Scheduler defines database events by offering the user Schedule, Associated Actions, Descriptions, Trigger History and Oracle Database Monitor Tabs

Tidal Enterprise Scheduler allows the user to pass variables to an Oracle database job.

Tidal Enterprise Scheduler with Enterprise Adapter for Oracle Database ensures that you can deliver maximum throughput, minimum processing time, and rock-solid reliability for your Oracle-centric workload. This powerful duo accomplishes these objectives by providing a single integrated enterprise job schedule that balances the service requirements of all your batch workloads whether they were created from within Oracle or exist in support of other applications and technologies within your business.

TIDAL[®]
SOFTWARE

For more information or to speak with a representative, contact Tidal Software™ at:

1 (877) 55 TIDAL
sales@tidalsoftware.com

EMEA headquarters:
+44 1628 509 020
+44 1628 509 120 (fax)

Or visit our web site at:
www.tidalsoftware.com